

# SMOKI srl



Complying with USA and Canada construction directions

Complying with CE construction directions

## ***SIMPLIFIED MANUAL - BIWEEKLY AND ROUTINE MAINTENANCE FOR SOOT ABATEMENT SYSTEM SMOKI JUNIOR***

**the present manual does not replace the complete version delivered with the unit.**



**Phase 1**

***EVERY WORKING DAY - Page 1***

**Phase 2**

***BIWEEKLY MAINTENANCE - Page 2 to 3***

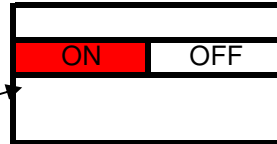
**Phase 3**

***ROUTINE MAINTENANCE (EVERY 2 MONTHS) Page 4 to 7***

## Phase 1

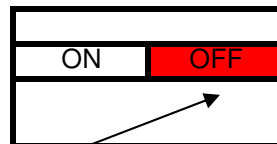
### ***EVERY WORKING DAY***

SWITCH POSITION



***The unit must be switched on when the fire in the oven is started and stay on as long as the oven is working.***

SWITCH POSITION



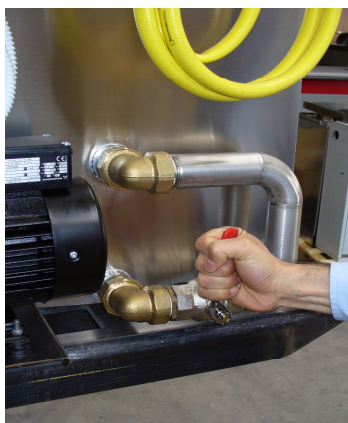
***The unit must be switched off at the end of the working time when the fire in the oven is extinguished.***

## Phase 2

### ***BIWEEKLY MAINTENANCE***



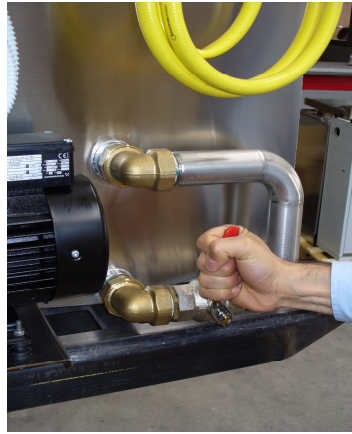
***Empty all water from the tank in order to eliminate the soot accumulated in the unit.  
This operation must be performed before starting the fire in the oven with machine switched off.***



***Turn the control lever in horizontal position as shown in the picture.***



***Once the lever is open, water level in the machine will start to lower  
until the tank is empty.***



*When the tank is empty, turn the lever in the original position.*



*Turn on the system. The machine starts to fill with water up to level and the smoke wash begins.*

## Phase 3

### ***ROUTINE MAINTENANCE (EVERY 2 MONTHS)***

*Every 2 months, with oven and unit off, perform an accurate maintenance of the unit.*



***Empty the water tank***



***Unscrew the 4 fastening knobs to open the inspection door***



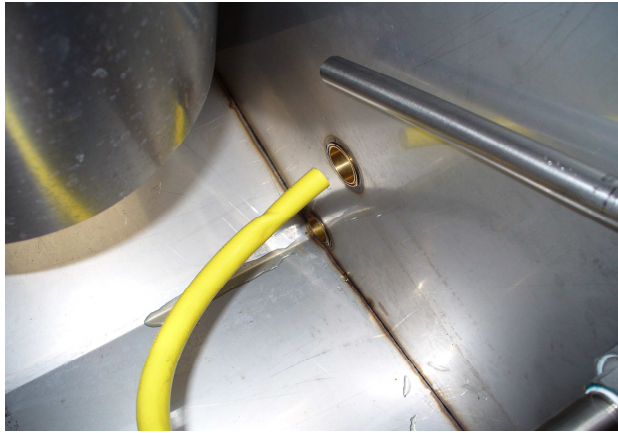
***Open the auxiliary tap connected to the hose.***



*Clean the tank with a jet of water*



***Direct the jet of water towards the water level float assembly in the lower part of the tank (see picture), carefully clean the assembly hole and arm and make sure the up and down movement performs correctly.***



***The water expulsion at level to sewer (upper hole) and the water drain gate (lower hole ) must be kept always very clean (see pictures)***



***The water expulsion hole must be always kept clean and free of muddy waste. To do so, put the hose inside and clean with a jet of water.***

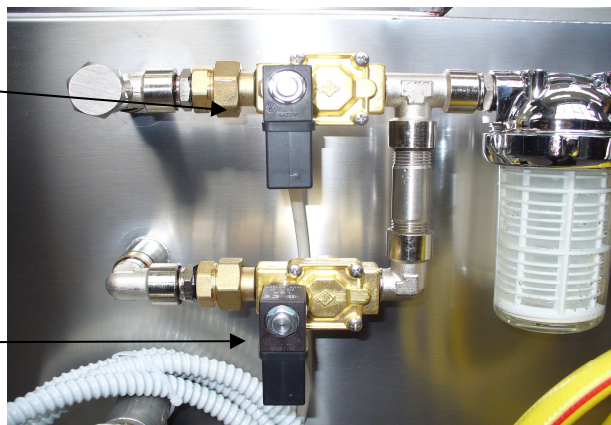
## VERY IMPORTANT REMARK (WITH MACHINE OFF) :

to avoid anomalous water loss, **ALWAYS MAKE SURE** that there are no leaks .

In the event that water leaks are found , promptly replace the parts indicated below and close the tap water connection until the problem is resolved.

*Water level maintenance solenoid valve*

*Fast water filling solenoid valve.*



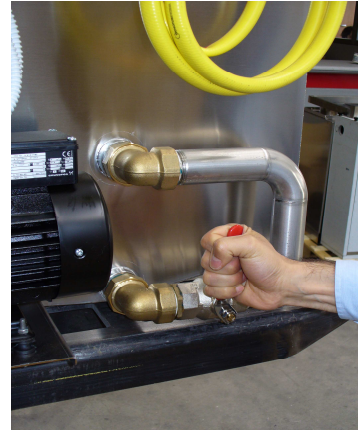
*Water level maintenance solenoid valve pipe connection*

*Fast water filling solenoid valve pipe connection*

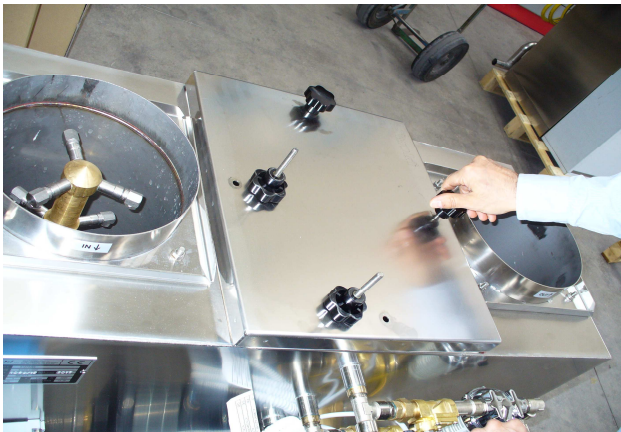


In the event of anomalous water loss, immediately replace the solenoid valve





**After cleaning the water tank, close the auxiliary tap and turn the control lever in the original position as shown in the picture.**



**Close the inspection door by means of the 4 fastening knobs**



**Switch the machine on**



**It the unit is working properly, the manometer above the pump shows a pressure around 1,8 bar.**

**SMOKI srl**  
Via Cella Raibano, 16/C  
47843 Misano Adriatico (RN) ITALIA  
**TEL. (0541) 833748- FAX (0541) 821441**

**<http://www.smoki.it>**

**e mail: [Info@smoki.it](mailto:Info@smoki.it) - bookkeeping**

**e mail: [commerciale@smoki.it](mailto:commerciale@smoki.it) - sales and export dept.**

**e mail: [magazzino@smoki.it](mailto:magazzino@smoki.it) - warehouse**



































































































